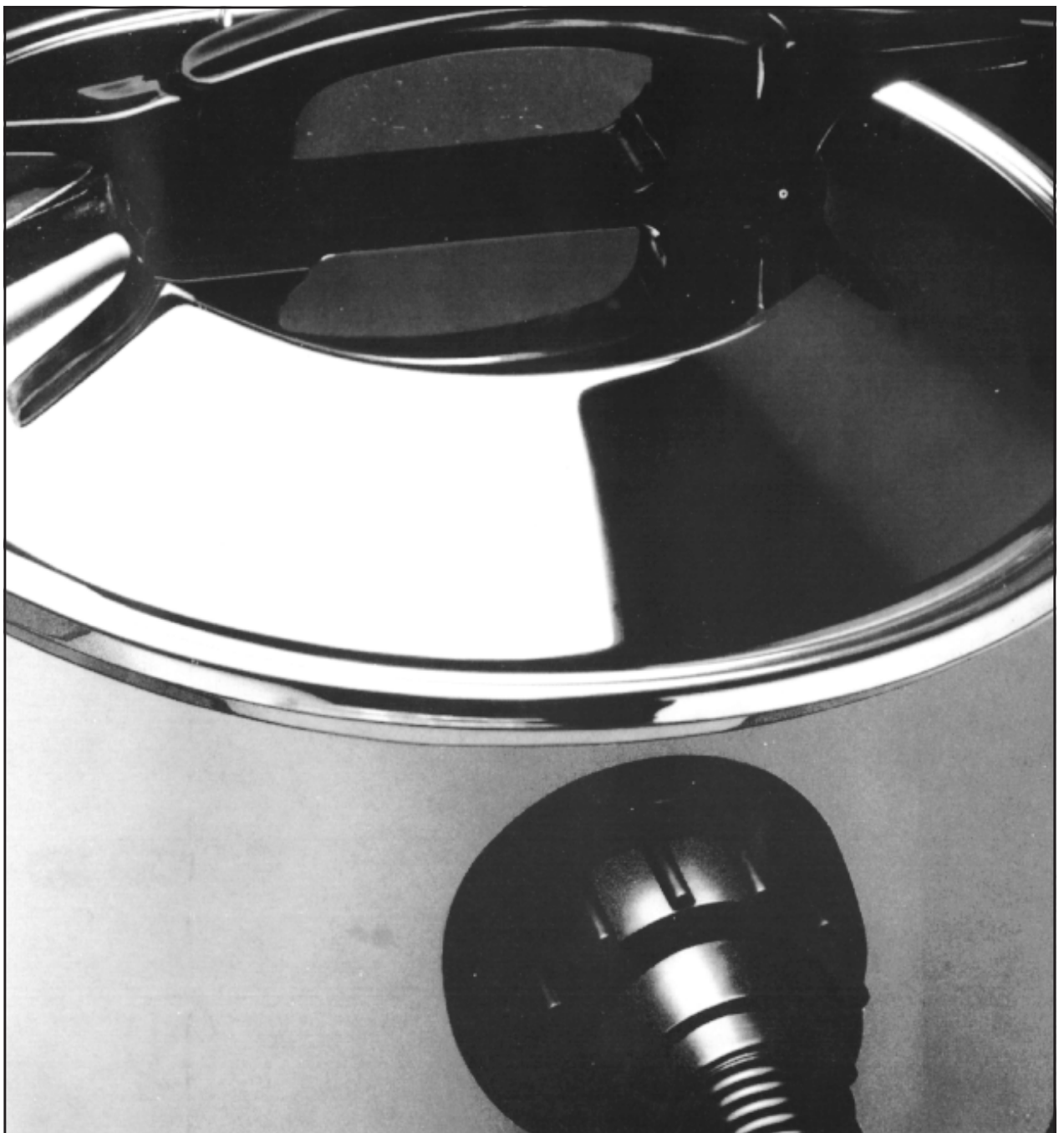


HEV 115 Vacuum Range

Spare Parts Lists
Exploded Views
Wiring Diagram

HEV 115 240V

HEV 115 110V



```

*****
* Item No. Product Code Description Quantity *
*****
* 1 81096 RATING LABEL(HEV 115) BSI 19/700 ISS 9 1 *
* 1 69120A UNICAP WASHER 2 *
* 2 81171 MOTOR HEAD LID 19/792 ISS 2 DMV 120 1 *
* 2 69120B SNAP CAP (CAP) BLK 2 *
* 3 71311 SCREW WN1412-KB40X10-Z 3 *
* 4 81064 CABLE CLAMP 19/663 ISS 2 1 *
* 5 81179 TERMINAL BLOCK P19/787 ISS 1 1 *
* 6 71319 6 X 3/4 POZI PAN HD S/TAP SCRW AB ZINC/C 2 *
* 9 81131 CABLE CONN BRN 19/736 ISS 3 1 *
* 10 81132 CABLE CONN BLUE 19/737 ISS 3 1 *
* 11 81156 PWRHD SWITCH LABEL 19/763 ISS 1 DMV 120 1 *
* 12 70094 BRN CONN LEAD 1/600/13 1 *
* 13 70093 BLUE CONN LEAD 1/600/12 ISS 13 1 *
* 14 70147 ROCKER SWITCH 2 *
* 16 67424 CORDSET 3X1X10 3PIN 19/865 1 *
* 17 66404 CABLE GROMMET P18/663 ISS 2 1 *
* 18 69038 CABLE GRIP 2X1MM 7/649 ISS 5 1 *
* 19 65039 SPRING CABLE REST: 7/677 ISS 4 1 *
* 20 81129 RESTRAINT SPRING.19/734 ISS 1 1 *
* 21 70020 TERMINAL RED DVFP01-6.3F 2 *
* 22 70040 BUTT CONNECTOR DVBC 1 7 *
* 23 81130 MAINS SUPPRESSOR P19/735 ISS 4 1 *
* 25 70063 CABLE TIE ALT-250M PV4 1 *
* 26 81180 MTG PLATFORM P19/788 ISS 1 1 *
* 27 81170 MOTOR HEAD TOP.19/791 ISS 1 DMV 120 1 *
* 28 71026 M3.5 X 26 SPRING TENSION PIN 2 *
* 29 81049 MOTOR GASKET 19/647 ISS 1 120 ALL 1 *
* 30 81150 INSULATION EXHAUST19/757 ISS 7 1 *
* 31 70012 MOTOR 230V 1 *
* 32 70146 CABLE TIE WHITE NYLON T50L/HS 1 *
* 33 70145 SWITCH ^^^ HEV 1 *
* 34 69027 MOTOR SUPPORT RING 7/646 ISS 3 MINI 1 *
* 36 81000 MOTORHEAD BASE 19/600 ISS 8 1 *
* 37 71308 SCREW PLASFORM NO8X19 12 *
* 41 71347 M6 X 16 STEEL POZI SCREW ZINC/CLEAR 4 *
* 42 71441 1/4 SHAKEPROOF WASHER INTERNAL TEETH 4 *
* 43 81037 BTM FILTER SPIN.19/639 ISS 1 HEV 1 *
* 44 69267 CARTRIDGE FILTER 2/725 ISS 2 HEV 1 *
* 45 71312 M6X16 PLASTITE POZI PAN Z/P SCREW 5 *
* 46 81039 TOP FILTER SPIN.19/641 ISS 1 HEV 1 *
* 47 81040 FILTER GASKET 19/642 ISS 2 HEV 1 *
* 50 81157 PWR SOCKET LABEL 19/764 ISS 3 DMV 120 1 *
* 51 70108 SOCKET BLACK 1 *
* 52 68266 RETAINING SPRING 7/685/1 ISS 4 DMV 1 *
* 55 81133 CABLE CONN BRN 19/738 1 *
* 56 81134 CABLE CONN BLUE 19/739 ISS 3 1 *
* 57 71382 M4 X 16 BRASS POZI PAN M/C SCREW 1 *
* 58 81135 CABLE CONN Y&G 19/740 ISS 3 1 *
* 59 71426 M4 X 9 X .8 BRASS WASHER BS4320 FORM A 1 *
*****

```

```

*****
* Item No. Product Code Description Quantity *
*****
* 60 71170 M4 BRASS HEX LOCK NUT BS4183 1 *
* 61 81162 INSULATION INLET 19/876 ISS 2 1 *
* 62 69089 KWIKSTICK PAD 25MMX25MM 1 *
* 63 81089 MACHINE LABEL HEV 115 19/693 ISS 6 1 *
* 70 69198 CABLE REST: LEVER 7/675 ISS 4 MINI 2 *
* 72 65041 BALL STAINLESS 1/4DIA 2 *
* 73 71422 1/4 X 9/16 X 20G BRT STL WASHER TLB 3L 2 *
* 75 71164 M6 GRD 8 NYLON INSERT SELF LOCK NUT DIN9 2 *
* 76 81041 SPACER 19/872 ISS 1 2 *
* 77 65038 COMP SPRING 6/686 ISS 1 2 *
* 79 71348 M6 X 40 STEEL POZI PAN SCREW ZINC/CLEAR 2 *
* 100 81147 DRY CLOTH FILTER.19/754 ISS 4 DMV 120 1 *
* 101 71329 SCREW WN 1412 KB50 X 14Z EPOSEAL 8 *
* 102 81004 CONTAINER 20LITRE 19/606 ISS 13 120 1 *
* 103 81003 HANDLE MOULDING 19/605 ISS. 5 2 *
* 104 81050 CASTOR 35MM P19/660 ISS 1 120 ALL 2 *
* 105 81051 8MM SCREWED SHAFT P19/689 ISS 1 120 ALL 2 *
* 106 68011 WASHER 16SWG 2/691 ISS 5 ALL 2 *
* 107 71379 M5 X 25 STEEL POZI PAN SCRW ZINC & CLEAR 3 *
* 108 71008 2BA SHAKEPROOF WASHER INTERNAL TEETH 3 *
* 109 81006 AXLE.19/609 ISS 5 120 1 *
* 110 81069 WHEEL & CAP P19/678 ISS 3 120 2 *
* 111 71506 WASHER WAVE 1/2" DMV HEV 4 *
* 112 71421 1/2 X 1 X 17G BRT STL WASHER TBL 3L ZINC 4 *
* 113 71471 EXTERNAL CIRCLIP N1400 0050 4 *
* 115 69265 HOSE CONN SEAL 14/668 ISS 2 1 *
* 116 81018 INLET PLAIN 19/623 ISS 3 1 *
* 123 58302 32MM ST/ST TELESCOPIC EXTENSION TUBE 1 *
* 124 58277 FLOOR TOOL 272MM RD272 (32MM) 1 *
* 125 56046 ONE DISPOS PAPER DUST BAG 120/115 5 *
* 700 77200 EXP:VIEW DMV120 ISSUE 5 83102 1 *
* 801 77191 EXP VIEW MTR HEAD ISS 7 HEV 115 1 *
* 801 77750 INTRO 500/330 ISS 1 01/10/99 1 *
* 801 77303 500/155 ISSUE 1 13/05/91 1 *
* 802 77302 MOD 922 ISSUE 2 13/05/91 1 *
* 802 77497 MOD 1163 ISS 2 18/04/95 1 *
* 802 77468 MOD 1123 ISS 2 15/07/94 1 *
* 802 77879 MOD 1447 ISS 2 24/10/01 1 *
* 802 77783 MOD 1373 ISS 2 08/11/99 1 *
* 802 77304 MOD 923 ISSUE 2 23/05/91 1 *
* 803 77364 MOD 985 ISSUE 3 27/02/92 1 *
* 803 77742 MOD 1347 ISS 3 01/06/99 2 *
* 803 77473 MOD 1125 ISS 3 27/07/94 1 *
* 803 77860 MOD 1433 ISS 3 26/03/01 1 *
* 804 77470 MOD 1123 ISS 4 15/07/94 1 *
* 804 77788 MOD 1377 ISS 4 23/11/99 2 *
* 804 77743 MOD 1347 ISS 4 01/06/99 1 *
* 805 77795 MOD 1388 ISS 5 26/01/00 1 *
* 805 77877 MOD 1441 ISS 5 17/07/01 2 *
* 805 77754 MOD 1365 ISS 5 01/10/99 1 *
* 806 77761 MOD 1366 ISS 6 12/10/99 1 *
* 903 72406 OPERATING INSTR: HEV 115 1 *
* 904 72027 PACKING CASE DMV 19/873 ISS.3 1 *
* 906 72077 KITE SWING LABEL P7/775 ISS 1 1 *
* 907 72213 MAIN LEAD LABEL 3 CORE P16/1120/2 ISS 1 1 *
* 908 72093 SHELF DMV120 HEV115 19/862 ISS 2 1 *
* 909 58300 32MM ST/ST HOSE & P/GRIP ASSY 1 *
*****

```

The following Sub Assemblies are available for the HEV 115 240V

UK

```

*****
* 69120          SNAP CAP & WASHER          *
*****

```

Comprising of the following item numbers:-

1, 2,

```

*****
* 83102          CONTAINER S/ASSY          DMV HEV          *
*****

```

Comprising of the following item numbers:-

100, 101, 102, 103, 104, 105, 106, 107, 108, 109, 110, 111, 112, 113, 115, 116, 125, 700, 801, 802, 803, 804, 805,

```

*****
* 83118          COMMON ITEMS CTNR DMVHEV          *
*****

```

Comprising of the following item numbers:-

100, 101, 103, 104, 105, 106, 108, 111, 112, 115, 116, 801, 802, 803, 804, 805,

```

*****
* 83166          MOTOR HEAD HEV 115 240V          *
*****

```

Comprising of the following item numbers:-

1, 2, 3, 4, 5, 6, 9, 10, 11, 12, 13, 14, 16, 17, 18, 19, 20, 21, 22, 23, 25, 26, 27, 28, 29, 30, 31, 32, 33, 34, 36, 37, 41, 42, 43, 44, 45, 46, 47, 50, 51, 52, 55, 56, 57, 58, 59, 60, 61, 62, 63, 70, 72, 73, 75, 76, 77, 79, 801, 802, 803, 804, 805, 906, 907,

```

*****
* 83190          DRY ACCESSORY KIT 32MM          *
*****

```

Comprising of the following item numbers:-

123, 124, 801, 802,

```

*****
* Item No.   Product Code   Description                               Quantity *
*****
*      1     81098          RATING LABEL(HEV 115)110V 19/702 ISS 6           1 *
*      1     69120A         UNICAP WASHER                                   2 *
*      2     69120B         SNAP CAP (CAP) BLK                             2 *
*      2     81002          MOTORHEAD LID 19/604 ISS 8                     1 *
*      3     71311          SCREW   WN1412-KB40X10-Z                       3 *
*      4     81064          CABLE CLAMP 19/663 ISS 2                       1 *
*      5     81179          TERMINAL BLOCK P19/787 ISS 1                   1 *
*      6     71319          6 X 3/4 POZI PAN HD S/TAP SCRW AB ZINC/C       2 *
*     12     70094          BRN CONN LEAD 1/600/13                         1 *
*     13     70093          BLUE CONN LEAD 1/600/12 ISS 13                 1 *
*     14     70147          ROCKER SWITCH                                  1 *
*     16     67424          CORDSET 3X1X10 3PIN 19/865                     1 *
*     17     66404          CABLE GROMMET P18/663 ISS 2                    1 *
*     18     69038          CABLE GRIP 2X1MM 7/649 ISS 5                   1 *
*     19     65039          SPRING CABLE REST: 7/677 ISS 4                 1 *
*     20     81129          RESTRAINT SPRING.19/734 ISS 1                  1 *
*     21     70020          TERMINAL RED DVFP01-6.3F                        2 *
*     22     70040          BUTT CONNECTOR DVBC 1                          4 *
*     23     81130          MAINS SUPPRESSOR P19/735 ISS 4                 1 *
*     25     70063          CABLE TIE ALT-250M PV4                         1 *
*     26     81180          MTG PLATFORM P19/788 ISS 1                     1 *
*     27     81001          MOTORHEAD TOP 19/602 ISS 9 NO PH               1 *
*     28     71026          M3.5 X 26 SPRING TENSION PIN                   2 *
*     29     81048          MOTOR GASKET 10MM 19/646 ISS 1                 1 *
*     30     81150          INSULATION EXHAUST19/757 ISS 7                 1 *
*     31     70046          MOTOR THROFLOW 110V                            1 *
*     32     70146          CABLE TIE WHITE NYLON T50L/HS                 1 *
*     33     70145          SWITCH ^^^ HEV                                 1 *
*     34     69027          MOTOR SUPPORT RING 7/646 ISS 3 MINI            1 *
*     36     81000          MOTORHEAD BASE 19/600 ISS 8                    1 *
*     37     71308          SCREW PLASFORM NO8X19                          12 *
*     41     71347          M6 X 16 STEEL POZI SCREW ZINC/CLEAR            4 *
*     42     71441          1/4 SHAKEPROOF WASHER INTERNAL TEETH          4 *
*     43     81037          BTM FILTER SPIN.19/639 ISS 1 HEV               1 *
*     44     69267          CARTRIDGE FILTER 2/725 ISS 2 HEV              1 *
*     45     71312          M6X16 PLASTITE POZI PAN Z/P SCREW             5 *
*     46     81039          TOP FILTER SPIN.19/641 ISS 1 HEV              1 *
*     47     81040          FILTER GASKET 19/642 ISS 2 HEV                1 *
*     57     71382          M4 X 16 BRASS POZI PAN M/C SCREW              1 *
*     58     81135          CABLE CONN Y&G 19/740 ISS 3                   1 *
*     59     71426          M4 X 9 X .8 BRASS WASHER BS4320 FORM A        1 *
*     60     71170          M4 BRASS HEX LOCK NUT BS4183                  1 *
*     61     81162          INSULATION INLET 19/876 ISS 2                  1 *
*     62     69089          KWIKSTICK PAD 25MMX25MM                       1 *
*     63     81089          MACHINE LABEL HEV 115 19/693 ISS 6            1 *
*     70     69198          CABLE REST: LEVER 7/675 ISS 4 MINI            2 *
*     72     65041          BALL STAINLESS 1/4DIA                         2 *
*     73     71422          1/4 X 9/16 X 20G BRT STL WASHER TLB 3L        2 *
*     75     71164          M6 GRD 8 NYLON INSERT SELF LOCK NUT DIN9      2 *
*****

```

Parts list for: 55162 HEV 115 110V

Page No. 2

```

*****
* Item No.   Product Code   Description                               Quantity *
*****
*      76    81041          SPACER 19/872 ISS 1                       2 *
*      77    65038          COMP SPRING      6/686 ISS 1                       2 *
*      79    71348          M6 X 40 STEEL POZI PAN SCREW ZINC/CLEAR  2 *
*     100    81147          DRY CLOTH FILTER.19/754 ISS 4 DMV 120    1 *
*     101    71329          SCREW WN 1412 KB50 X 14Z EPOSEAL        8 *
*     102    81004          CONTAINER 20LITRE 19/606 ISS 13 120     1 *
*     103    81003          HANDLE MOULDING  19/605 ISS. 5                   2 *
*     104    81050          CASTOR 35MM P19/660 ISS 1 120 ALL        2 *
*     105    81051          8MM SCREWED SHAFT P19/689 ISS 1 120 ALL  2 *
*     106    68011          WASHER 16SWG 2/691 ISS 5 ALL            2 *
*     107    71379          M5 X 25 STEEL POZI PAN SCRW ZINC & CLEAR  3 *
*     108    71008          2BA SHAKEPROOF WASHER INTERNAL TEETH     3 *
*     109    81006          AXLE.19/609 ISS 5 120                    1 *
*     110    81069          WHEEL & CAP P19/678 ISS 3 120            2 *
*     111    71506          WASHER WAVE 1/2" DMV HEV                 4 *
*     112    71421          1/2 X 1 X 17G BRT STL WASHER TBL 3L ZINC  4 *
*     113    71471          EXTERNAL CIRCLIP N1400 0050              4 *
*     115    69265          HOSE CONN SEAL 14/668 ISS 2              1 *
*     116    81018          INLET PLAIN 19/623 ISS 3                 1 *
*     123    58302          32MM ST/ST TELESCOPIC EXTENSION TUBE     1 *
*     124    58277          FLOOR TOOL 272MM RD272 (32MM)           1 *
*     125    56046          ONE DISPOS PAPER DUST BAG 120/115        5 *
*     700    77200          EXP:VIEW DMV120 ISSUE 5 83102            1 *
*     800    77193          EXP VIEW HEV115 ISSUE 3 55162            1 *
*     801    77750          INTRO 500/330 ISS 1 01/10/99             1 *
*     801    77303          500/155 ISSUE 1 13/05/91                 1 *
*     802    77497          MOD 1163 ISS 2 18/04/95                   1 *
*     802    77468          MOD 1123 ISS 2 15/07/94                   1 *
*     802    77879          MOD 1447 ISS 2 24/10/01                   1 *
*     802    77783          MOD 1373 ISS 2 08/11/99                   1 *
*     802    77304          MOD 923 ISSUE 2 23/05/91                  1 *
*     802    77302          MOD 922 ISSUE 2 13/05/91                  1 *
*     803    77364          MOD 985 ISSUE 3 27/02/92                  1 *
*     803    77742          MOD 1347 ISS 3 01/06/99                   2 *
*     803    77860          MOD 1433 ISS 3 26/03/01                   1 *
*     803    77473          MOD 1125 ISS 3 27/07/94                   1 *
*     804    77470          MOD 1123 ISS 4 15/07/94                   1 *
*     804    77743          MOD 1347 ISS 4 01/06/99                   1 *
*     804    77788          MOD 1377 ISS 4 23/11/99                   2 *
*     805    77877          MOD 1441 ISS 5 17/07/01                   2 *
*     805    77754          MOD 1365 ISS 5 01/10/99                   1 *
*     805    77795          MOD 1388 ISS 5 26/01/00                   1 *
*     806    77761          MOD 1366 ISS 6 12/10/99                   1 *
*     903    72406          OPERATING INSTR: HEV 115                   1 *
*     904    72027          PACKING CASE DMV 19/873 ISS.3              1 *
*     905    72213          MAIN LEAD LABEL 3 CORE P16/1120/2 ISS 1   1 *
*     908    72093          SHELF DMV120 HEV115 19/862 ISS 2          1 *
*     909    58300          32MM ST/ST HOSE & P/GRIP ASSY            1 *
*****

```

The following Sub Assemblies are available for the HEV 115 110V

```

*****
* 69120          SNAP CAP & WASHER          *
*****

```

Comprising of the following item numbers:-

1, 2,

```

*****
* 83102          CONTAINER S/ASSY          DMV HEV          *
*****

```

Comprising of the following item numbers:-

100, 101, 102, 103, 104, 105, 106, 107, 108, 109, 110, 111, 112, 113, 115, 116, 125, 700, 801, 802, 803, 804, 805,

```

*****
* 83118          COMMON ITEMS CTNR DMVHEV          *
*****

```

Comprising of the following item numbers:-

100, 101, 103, 104, 105, 106, 108, 111, 112, 115, 116, 801, 802, 803, 804, 805,

```

*****
* 83170          MOTOR HEAD HEV 115 110V          *
*****

```

Comprising of the following item numbers:-

1, 2, 3, 4, 5, 6, 12, 13, 14, 16, 17, 18, 19, 20, 21, 22, 23, 25, 26, 27, 28, 29, 30, 31, 32, 33, 34, 36, 37, 41, 42, 43, 44, 45, 46, 47, 57, 58, 59, 60, 61, 62, 63, 70, 72, 73, 75, 76, 77, 79, 800, 802, 803, 804, 805, 905,

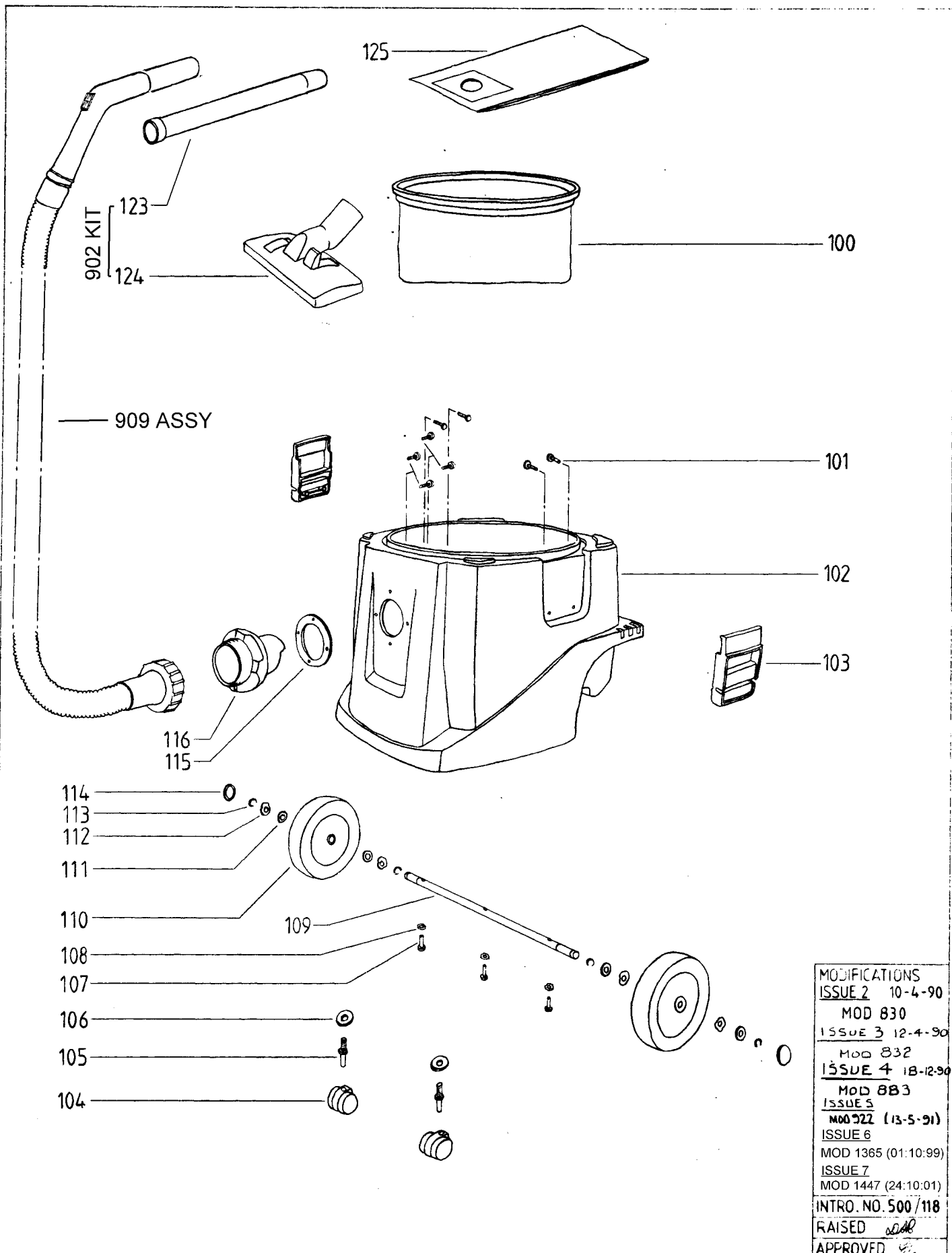
```

*****
* 83190          DRY ACCESSORY KIT 32MM          *
*****

```

Comprising of the following item numbers:-

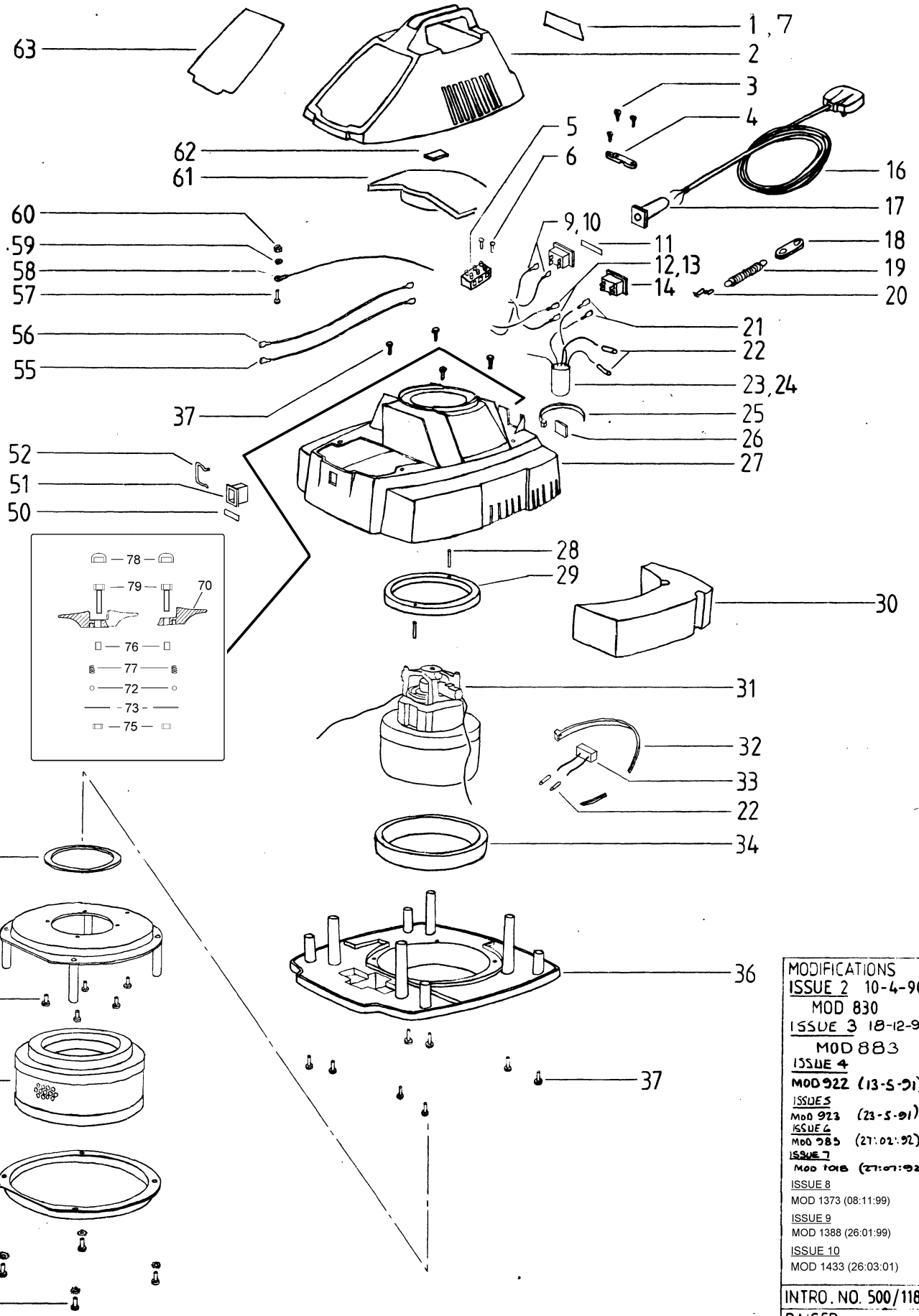
123, 124, 801, 802,



MODIFICATIONS
 ISSUE 2 10-4-90
 MOD 830
 ISSUE 3 12-4-90
 MOD 832
 ISSUE 4 18-12-90
 MOD 883
 ISSUE 5
 MOD 922 (13-5-91)
 ISSUE 6
 MOD 1365 (01:10:99)
 ISSUE 7
 MOD 1447 (24:10:01)
 INTRO. NO. 500/118
 RAISED *SA*
 APPROVED *SA*

MODEL	240v	220v TUV	110v	220v NEMKO	220v	220v FRANCE	CONTAINER DMV 120 & HEV 115
DMV 120	55150	55151	55152	55153	55154	55155	
HEV 115	55160	55161	55162	55163	55164	55165	

SCHEDULE CODE NO'S.
 ISSUE 7
 DATE 1-3-90
 EXP. VIEW CODE NO.
 77200
 SHEET 2 OF 2



MODIFICATIONS
 ISSUE 2 10-4-90
 MOD 830
 ISSUE 3 10-12-90
 MOD 883
 ISSUE 4
 MOD 922 (13-5-91)
 ISSUE 5
 MOD 923 (23-5-91)
 ISSUE 6
 MOD 985 (27-02-92)
 ISSUE 7
 MOD 1018 (27-07-92)
 ISSUE 8
 MOD 1373 (08-11-99)
 ISSUE 9
 MOD 1388 (26-01-99)
 ISSUE 10
 MOD 1433 (26-03-01)

INTRO. NO. 500/118
 RAISED
 APPROVED

MODEL	240v	220v	220v NEMKO	220v 3 PIN	220v FRANCE
HEV 115	55160	55161	55163	55164	55165

MOTOR HEAD
 HEV 115

ISSUE
 DATE 1-3-90
 EXP. VIEW CODE NO.
 77191
 SHEET 1 OF 2

SCHEDULE CODE NO.'S

ELECTRICAL SPARES REPLACEMENT INSTRUCTIONS: DMV 120 & HEV 115

PLEASE READ BEFORE FITTING OF REPLACEMENT PART

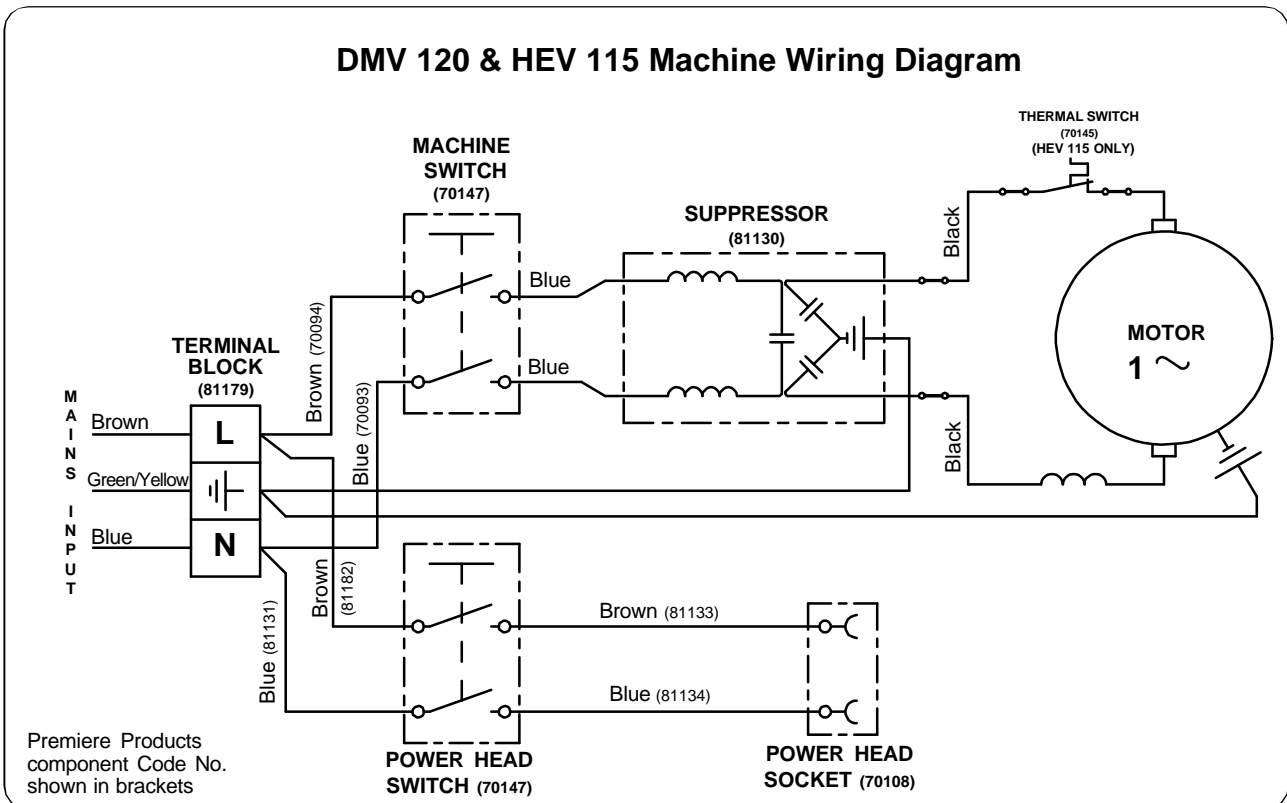
Thank you for purchasing this original replacement part. Before fitting, machine users must ensure the following:-

1. Replacement part is fitted by a qualified service engineer only.
2. Clear reference is made to the wiring diagram detailed below.
3. All test instructions are carried out as detailed below, before returning the electrical appliance to the work place.

Should you require further assistance please contact Premiere Products Machine Division Service department.

Failure to follow the above instructions may affect your rights in law.

WARNING: Before undertaking any repair or disassembly of machines ensure that it is disconnected from the mains.



IMPORTANT: Electrical Safety Tests

Upon completion of service and repair work and before returning the electrical appliance to the work place, the following testing for electrical safety must be undertaken.

1. Earth Bond Resistance (Class I only).

Resistance max. = $(0.1 + R)$ Ohms

Where R = Resistance of supply cord earth wire.

2. Insulation Flash Test.

Class I appliance 1375 Volts AC for 6 secs. (Alternatively 1250 Volts AC for 10 secs.)

Class II appliance 4125 Volts AC for 6 secs. (Alternatively 3750 Volts AC for 10 secs.)



Premiere Products (Machine Division)
Oakley Gardens, Bouncers Lane, Cheltenham, Glos. GL52 5JD, England
Telephone: (01242) 243421 Fax: (01242) 528445