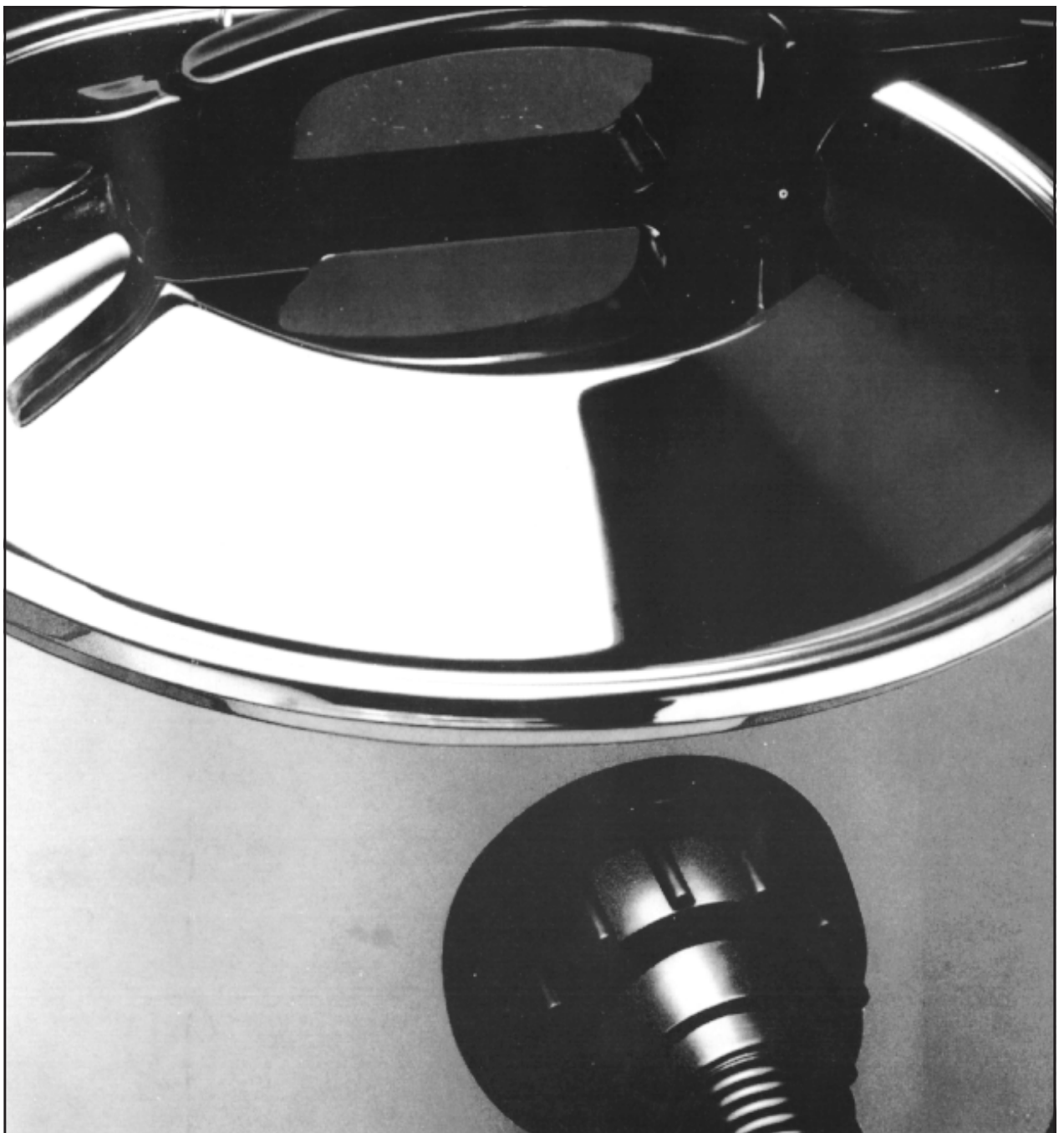


## **DMV 175 Vacuum Range**

Spare Parts Lists  
Exploded Views  
Wiring Diagram

**DMV 175 240V**

**DMV 175 110V**



Parts list for: 55140 DMV 175 UK

Page No. 1

```

*****
* Item No.   Product Code   Description                               Quantity *
*****
*      1     81081          DMV 175 UK RATING LABEL.19/863 ISS.2          1 *
*      1     69120A         UNICAP WASHER                                2 *
*      2     81002          MOTORHEAD LID 19/604 ISS 8                    1 *
*      2     69120B         SNAP CAP (CAP) BLK                            2 *
*      3     71311          SCREW   WN1412-KB40X10-Z                      3 *
*      4     81064          CABLE CLAMP 19/663 ISS 2                      1 *
*      5     81179          TERMINAL BLOCK P19/787 ISS 1                  1 *
*      6     71319          6 X 3/4 POZI PAN HD S/TAP SCRW AB ZINC/C      2 *
*     12     70094          BRN CONN LEAD 1/600/13                       1 *
*     13     70093          BLUE CONN LEAD 1/600/12 ISS 13               1 *
*     14     70147          ROCKER SWITCH                                1 *
*     16     67424          CORDSET 3X1X10 3PIN 19/865                   1 *
*     17     66404          CABLE GROMMET P18/663 ISS 2                  1 *
*     18     69038          CABLE GRIP 2X1MM 7/649 ISS 5                 1 *
*     19     65039          SPRING CABLE REST: 7/677 ISS 4              1 *
*     20     81129          RESTRAINT SPRING.19/734 ISS 1                1 *
*     21     70020          TERMINAL RED DVFP01-6.3F                      2 *
*     22     70040          BUTT CONNECTOR DVBC 1                        2 *
*     23     81130          MAINS SUPPRESSOR P19/735 ISS 4               1 *
*     25     70063          CABLE TIE ALT-250M PV4                       1 *
*     26     81180          MTG PLATFORM P19/788 ISS 1                   1 *
*     27     81001          MOTORHEAD TOP 19/602 ISS 9 NO PH             1 *
*     28     71026          M3.5 X 26 SPRING TENSION PIN                 2 *
*     29     81049          MOTOR GASKET 19/647 ISS 1 120 ALL           1 *
*     30     81150          INSULATION EXHAUST19/757 ISS 7              1 *
*     31     70012          MOTOR 230V                                    1 *
*     34     69027          MOTOR SUPPORT RING 7/646 ISS 3 MINI          1 *
*     36     81000          MOTORHEAD BASE 19/600 ISS 8                  1 *
*     37     71308          SCREW PLASFORM NO8X19                        12 *
*     38     81172          RETAINING BRACKET.19/779^ISS^2 DMV 120      1 *
*     39     71305          SCREW PLASTITE M3.5X10 CR PAN ST/STEEL      2 *
*     40     81111          FILTER STAND OFF 19/715 ISS 8 DMV 120      1 *
*     57     71382          M4 X 16 BRASS POZI PAN M/C SCREW            1 *
*     58     81135          CABLE CONN Y&G 19/740 ISS 3                 1 *
*     59     71426          M4 X 9 X .8 BRASS WASHER BS4320 FORM A      1 *
*     60     71170          M4 BRASS HEX LOCK NUT BS4183                1 *
*     61     81162          INSULATION INLET 19/876 ISS 2               1 *
*     62     69089          KWIKSTICK PAD 25MMX25MM                     1 *
*     63     81080          DMV 175 MACHINE LABEL. 19/857 ISS.2        1 *
*     70     69198          CABLE REST: LEVER 7/675 ISS 4 MINI          2 *
*     72     65041          BALL STAINLESS 1/4DIA                       2 *
*     73     71422          1/4 X 9/16 X 20G BRT STL WASHER TLB 3L     2 *
*     75     71164          M6 GRD 8 NYLON INSERT SELF LOCK NUT DIN9    2 *
*     76     81041          SPACER 19/872 ISS 1                         2 *
*     77     65038          COMP SPRING 6/686 ISS 1                     2 *
*     79     71348          M6 X 40 STEEL POZI PAN SCREW ZINC/CLEAR     2 *
*    100     81147          DRY CLOTH FILTER.19/754 ISS 4 DMV 120      1 *
*    101     71329          SCREW WN 1412 KB50 X 14Z EPOSEAL           8 *
*    102     81200          CONTAINER 7.5LTR DRG.19/856 ISS.3          1 *
*****

```

```

*****
* Item No.   Product Code   Description                               Quantity *
*****
*   103     81003          HANDLE MOULDING 19/605 ISS. 5                 2 *
*   104     81050          CASTOR 35MM P19/660 ISS 1 120 ALL          2 *
*   105     81051          8MM SCREWED SHAFT P19/689 ISS 1 120 ALL    2 *
*   106     68011          WASHER 16SWG 2/691 ISS 5 ALL              2 *
*   107     71389          M5 X 20 STEEL POZI PAN SCRW ZINC & CLEAR   3 *
*   108     71008          2BA SHAKEPROOF WASHER INTERNAL TEETH      3 *
*   109     81161          AXLE DRG.19/874 ISSUE 1                   1 *
*   110     81160          150MM WHEEL & CAP DRG.P19/875 ISS.1       2 *
*   111     71506          WASHER WAVE 1/2" DMV HEV                  4 *
*   112     71421          1/2 X 1 X 17G BRT STL WASHER TBL 3L ZINC   4 *
*   113     71498          EXTERNAL CIRCLIP D1400 0120              4 *
*   115     69265          HOSE CONN SEAL 14/668 ISS 2              1 *
*   116     81018          INLET PLAIN 19/623 ISS 3                 1 *
*   123     58302          32MM ST/ST TELESCOPIC EXTENSION TUBE      1 *
*   124     58277          FLOOR TOOL 272MM RD272 (32MM)           1 *
*   125     56023          ONE DISPOS PAPER BAG MINI DVU 140        5 *
*   700     77241          EXP VIEW DMV 175 CONTAINER                1 *
*   701     77240          EXP VIEW DMV 175 MOTOR HEAD              1 *
*   801     77744          INTRO 500/324 ISS 1 01/06/99            3 *
*   801     77303          500/155 ISSUE 1 13/05/91                1 *
*   801     77750          INTRO 500/330 ISS 1 01/10/99            1 *
*   802     77497          MOD 1163 ISS 2 18/04/95                  1 *
*   802     77751          MOD 1365 ISS 2 01/10/99                  1 *
*   802     77879          MOD 1447 ISS 2 24/10/01                  1 *
*   802     77782          MOD 1372 ISS 2 03/11/99                  1 *
*   802     77304          MOD 923 ISSUE 2 23/05/91                 1 *
*   802     77786          MOD 1377 ISS 2 23/11/99                  1 *
*   803     77742          MOD 1347 ISS 3 01/06/99                  1 *
*   803     77364          MOD 985 ISSUE 3 27/02/92                 1 *
*   803     77792          MOD 1386 ISS 3 21/01/00                  1 *
*   803     77758          MOD 1366 ISS 3 12/10/99                  1 *
*   803     77875          MOD 1441 ISS 3 17/07/01                  1 *
*   804     77861          MOD 1433 ISS 4 26/03/01                  1 *
*   804     77470          MOD 1123 ISS 4 15/07/94                  1 *
*   804     77788          MOD 1377 ISS 4 23/11/99                  1 *
*   805     77795          MOD 1388 ISS 5 26/01/00                  1 *
*   805     77877          MOD 1441 ISS 5 17/07/01                  1 *
*   903     72405          OPERATING INSTR: DMV 175                  1 *
*   904     72027          PACKING CASE DMV 19/873 ISS.3            1 *
*   906     72077          KITE SWING LABEL P7/775 ISS 1            1 *
*   908     72092          SHELF DMV175 19/861 ISS 2                1 *
*   909     58300          32MM ST/ST HOSE & P/GRIP ASSY           1 *
*****

```

PARTS LIST COMPLETE.

The following Sub Assemblies are available for the DMV 175 UK

```

*****
* 69120          SNAP CAP & WASHER          *
*****

```

Comprising of the following item numbers:-

1, 2,

```

*****
* 83118          COMMON ITEMS CTNR DMVHEV    *
*****

```

Comprising of the following item numbers:-

100, 101, 103, 104, 105, 106, 108, 111, 112, 115, 116, 801, 802, 803, 804, 805,

```

*****
* 83179          MOTOR HEAD DMV 175 UK      *
*****

```

Comprising of the following item numbers:-

1, 2, 3, 4, 5, 6, 12, 13, 14, 16, 17, 18, 19, 20, 21, 22, 23, 25, 26, 27, 28, 29, 30, 31, 34, 36, 37, 38, 39, 40, 57, 58, 59, 60, 61, 62, 63, 70, 72, 73, 75, 76, 77, 79, 701, 801, 802, 803, 804, 805, 906,

```

*****
* 83181          CONTAINER S/ASSY DMV 175   *
*****

```

Comprising of the following item numbers:-

100, 101, 102, 103, 104, 105, 106, 107, 108, 109, 110, 111, 112, 113, 115, 116, 125, 700, 801, 802, 803, 804, 805,

```

*****
* 83190          DRY ACCESSORY KIT 32MM     *
*****

```

Comprising of the following item numbers:-

123, 124, 801, 802,

```

*****
* Item No.   Product Code   Description                               Quantity *
*****
*      1     81083          DMV 175 110V RATING LABEL 19/880 ISS 1           1 *
*      1     69120A         UNICAP WASHER                                     2 *
*      2     81002          MOTORHEAD LID 19/604 ISS 8                       1 *
*      2     69120B         SNAP CAP (CAP) BLK                               2 *
*      3     71311          SCREW WN1412-KB40X10-Z                          3 *
*      4     81064          CABLE CLAMP 19/663 ISS 2                         1 *
*      5     81179          TERMINAL BLOCK P19/787 ISS 1                     1 *
*      6     71319          6 X 3/4 POZI PAN HD S/TAP SCRW AB ZINC/C        2 *
*     12     70094          BRN CONN LEAD 1/600/13                          1 *
*     13     70093          BLUE CONN LEAD 1/600/12 ISS 13                  1 *
*     14     70147          ROCKER SWITCH                                    1 *
*     16     67425          CORDSET 3X1X10 2PIN 19/866                      1 *
*     17     66404          CABLE GROMMET P18/663 ISS 2                     1 *
*     18     69038          CABLE GRIP 2X1MM 7/649 ISS 5                    1 *
*     19     65039          SPRING CABLE REST: 7/677 ISS 4                  1 *
*     20     81129          RESTRAINT SPRING.19/734 ISS 1                   1 *
*     21     70020          TERMINAL RED DVFP01-6.3F                         2 *
*     22     70040          BUTT CONNECTOR DVBC 1                           2 *
*     23     81130          MAINS SUPPRESSOR P19/735 ISS 4                   1 *
*     25     70063          CABLE TIE ALT-250M PV4                          1 *
*     26     81180          MTG PLATFORM P19/788 ISS 1                       1 *
*     27     81001          MOTORHEAD TOP 19/602 ISS 9 NO PH                 1 *
*     28     71026          M3.5 X 26 SPRING TENSION PIN                     2 *
*     29     81049          MOTOR GASKET 19/647 ISS 1 120 ALL                1 *
*     30     81150          INSULATION EXHAUST19/757 ISS 7                   1 *
*     31     70046          MOTOR THROFLOW 110V                              1 *
*     34     69027          MOTOR SUPPORT RING 7/646 ISS 3 MINI              1 *
*     36     81000          MOTORHEAD BASE 19/600 ISS 8                     1 *
*     37     71308          SCREW PLASFORM NO8X19                            12 *
*     38     81172          RETAINING BRACKET.19/779^ISS^2 DMV 120          1 *
*     39     71305          SCREW PLASTITE M3.5X10 CR PAN ST/STEEL          2 *
*     40     81111          FILTER STAND OFF 19/715 ISS 8 DMV 120          1 *
*     57     71382          M4 X 16 BRASS POZI PAN M/C SCREW                 1 *
*     58     81135          CABLE CONN Y&G 19/740 ISS 3                     1 *
*     59     71426          M4 X 9 X .8 BRASS WASHER BS4320 FORM A          1 *
*     60     71170          M4 BRASS HEX LOCK NUT BS4183                    1 *
*     61     81162          INSULATION INLET 19/876 ISS 2                    1 *
*     62     69089          KWIKSTICK PAD 25MMX25MM                         1 *
*     63     81080          DMV 175 MACHINE LABEL. 19/857 ISS.2            1 *
*     70     69198          CABLE REST: LEVER 7/675 ISS 4 MINI              2 *
*     72     65041          BALL STAINLESS 1/4DIA                           2 *
*     73     71422          1/4 X 9/16 X 20G BRT STL WASHER TLB 3L         2 *
*     75     71164          M6 GRD 8 NYLON INSERT SELF LOCK NUT DIN9        2 *
*     76     81041          SPACER 19/872 ISS 1                              2 *
*     77     65038          COMP SPRING 6/686 ISS 1                         1 *
*     79     71348          M6 X 40 STEEL POZI PAN SCREW ZINC/CLEAR         2 *
*    100     81147          DRY CLOTH FILTER.19/754 ISS 4 DMV 120          1 *
*    101     71329          SCREW WN 1412 KB50 X 14Z EPOSEAL                8 *
*    102     81200          CONTAINER 7.5LTR DRG.19/856 ISS.3              1 *
*****

```

```

*****
* Item No. Product Code Description Quantity *
*****
* 103 81003 HANDLE MOULDING 19/605 ISS. 5 2 *
* 104 81050 CASTOR 35MM P19/660 ISS 1 120 ALL 2 *
* 105 81051 8MM SCREWED SHAFT P19/689 ISS 1 120 ALL 2 *
* 106 68011 WASHER 16SWG 2/691 ISS 5 ALL 2 *
* 107 71389 M5 X 20 STEEL POZI PAN SCRW ZINC & CLEAR 3 *
* 108 71008 2BA SHAKEPROOF WASHER INTERNAL TEETH 3 *
* 109 81161 AXLE DRG.19/874 ISSUE 1 1 *
* 110 81160 150MM WHEEL & CAP DRG.P19/875 ISS.1 2 *
* 111 71506 WASHER WAVE 1/2" DMV HEV 4 *
* 112 71421 1/2 X 1 X 17G BRT STL WASHER TBL 3L ZINC 4 *
* 113 71498 EXTERNAL CIRCLIP D1400 0120 4 *
* 115 69265 HOSE CONN SEAL 14/668 ISS 2 1 *
* 116 81018 INLET PLAIN 19/623 ISS 3 1 *
* 123 58302 32MM ST/ST TELESCOPIC EXTENSION TUBE 1 *
* 124 58277 FLOOR TOOL 272MM RD272 (32MM) 1 *
* 125 56023 ONE DISPOS PAPER BAG MINI DVU 140 5 *
* 700 77241 EXP VIEW DMV 175 CONTAINER 1 *
* 701 77240 EXP VIEW DMV 175 MOTOR HEAD 1 *
* 801 77303 500/155 ISSUE 1 13/05/91 1 *
* 801 77750 INTRO 500/330 ISS 1 01/10/99 1 *
* 801 77744 INTRO 500/324 ISS 1 01/06/99 3 *
* 802 77497 MOD 1163 ISS 2 18/04/95 1 *
* 802 77751 MOD 1365 ISS 2 01/10/99 1 *
* 802 77304 MOD 923 ISSUE 2 23/05/91 1 *
* 802 77786 MOD 1377 ISS 2 23/11/99 1 *
* 802 77879 MOD 1447 ISS 2 24/10/01 1 *
* 802 77782 MOD 1372 ISS 2 03/11/99 1 *
* 803 77742 MOD 1347 ISS 3 01/06/99 1 *
* 803 77875 MOD 1441 ISS 3 17/07/01 1 *
* 803 77792 MOD 1386 ISS 3 21/01/00 1 *
* 803 77364 MOD 985 ISSUE 3 27/02/92 1 *
* 803 77758 MOD 1366 ISS 3 12/10/99 1 *
* 804 77470 MOD 1123 ISS 4 15/07/94 1 *
* 804 77788 MOD 1377 ISS 4 23/11/99 1 *
* 804 77845 MOD 1425 ISS 4 05/12/00 1 *
* 805 77862 MOD 1433 ISS 5 26/03/01 1 *
* 805 77795 MOD 1388 ISS 5 26/01/00 1 *
* 805 77877 MOD 1441 ISS 5 17/07/01 1 *
* 903 72405 OPERATING INSTR: DMV 175 1 *
* 904 72027 PACKING CASE DMV 19/873 ISS.3 1 *
* 908 72092 SHELF DMV175 19/861 ISS 2 1 *
* 909 58300 32MM ST/ST HOSE & P/GRIP ASSY 1 *
*****

```

PARTS LIST COMPLETE.

The following Sub Assemblies are available for the DMV 175 110V

```

*****
* 69120          SNAP CAP & WASHER          *
*****

```

Comprising of the following item numbers:-

1, 2,

```

*****
* 83118          COMMON ITEMS CTNR DMVHEV   *
*****

```

Comprising of the following item numbers:-

100, 101, 103, 104, 105, 106, 108, 111, 112, 115, 116, 801, 802, 803, 804, 805,

```

*****
* 83181          CONTAINER S/ASSY DMV 175   *
*****

```

Comprising of the following item numbers:-

100, 101, 102, 103, 104, 105, 106, 107, 108, 109, 110, 111, 112, 113, 115, 116, 125, 700, 801, 802, 803, 804, 805,

```

*****
* 83182          MOTOR HEAD DMV 175 110V   *
*****

```

Comprising of the following item numbers:-

1, 2, 3, 4, 5, 6, 12, 13, 14, 16, 17, 18, 19, 20, 21, 22, 23, 25, 26, 27, 28, 29, 30, 31, 34, 36, 37, 38, 39, 40, 57, 58, 59, 60, 61, 62, 63, 70, 72, 73, 75, 76, 77, 79, 701, 801, 802, 803, 804, 805,

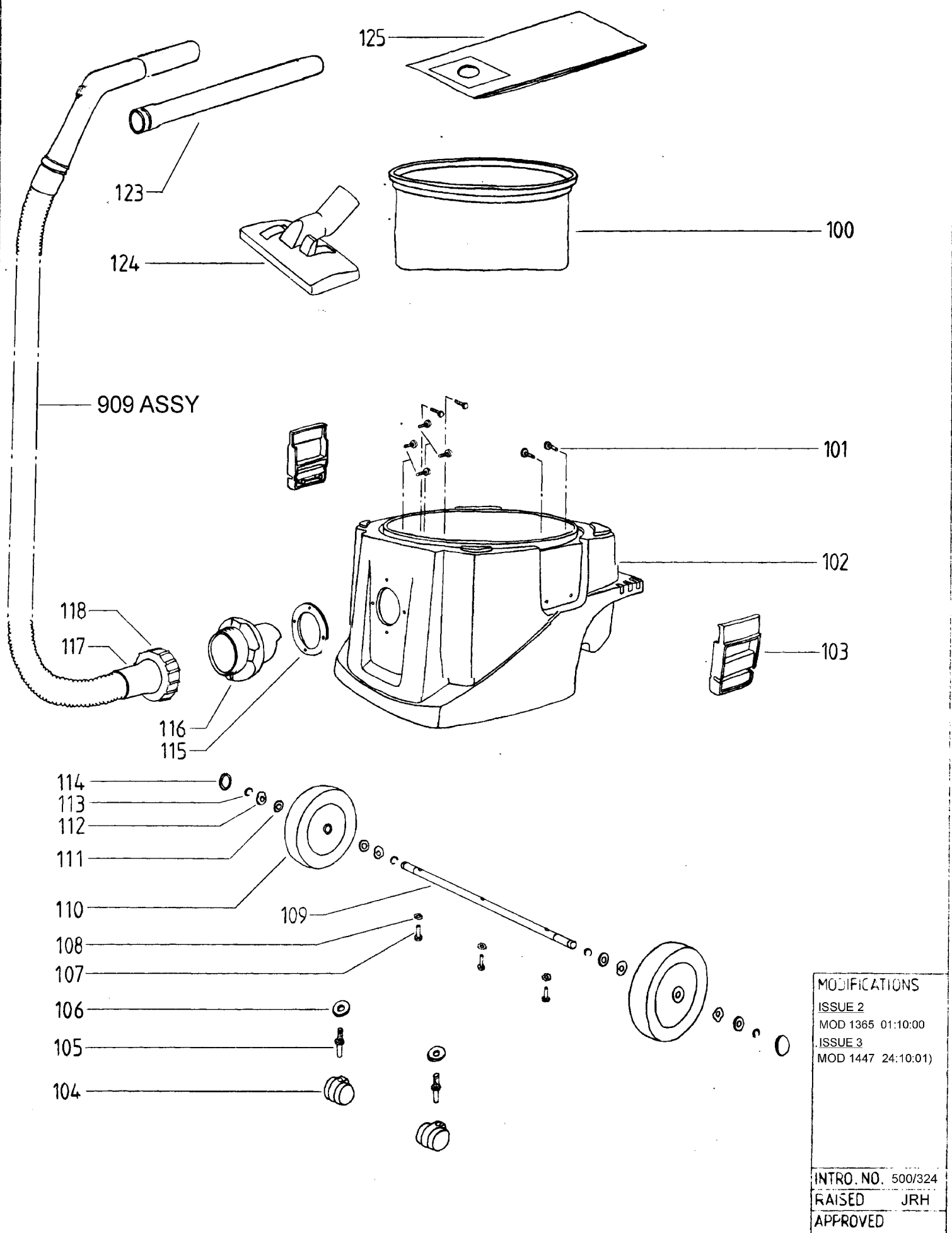
```

*****
* 83190          DRY ACCESSORY KIT 32MM     *
*****

```

Comprising of the following item numbers:-

123, 124, 801, 802,



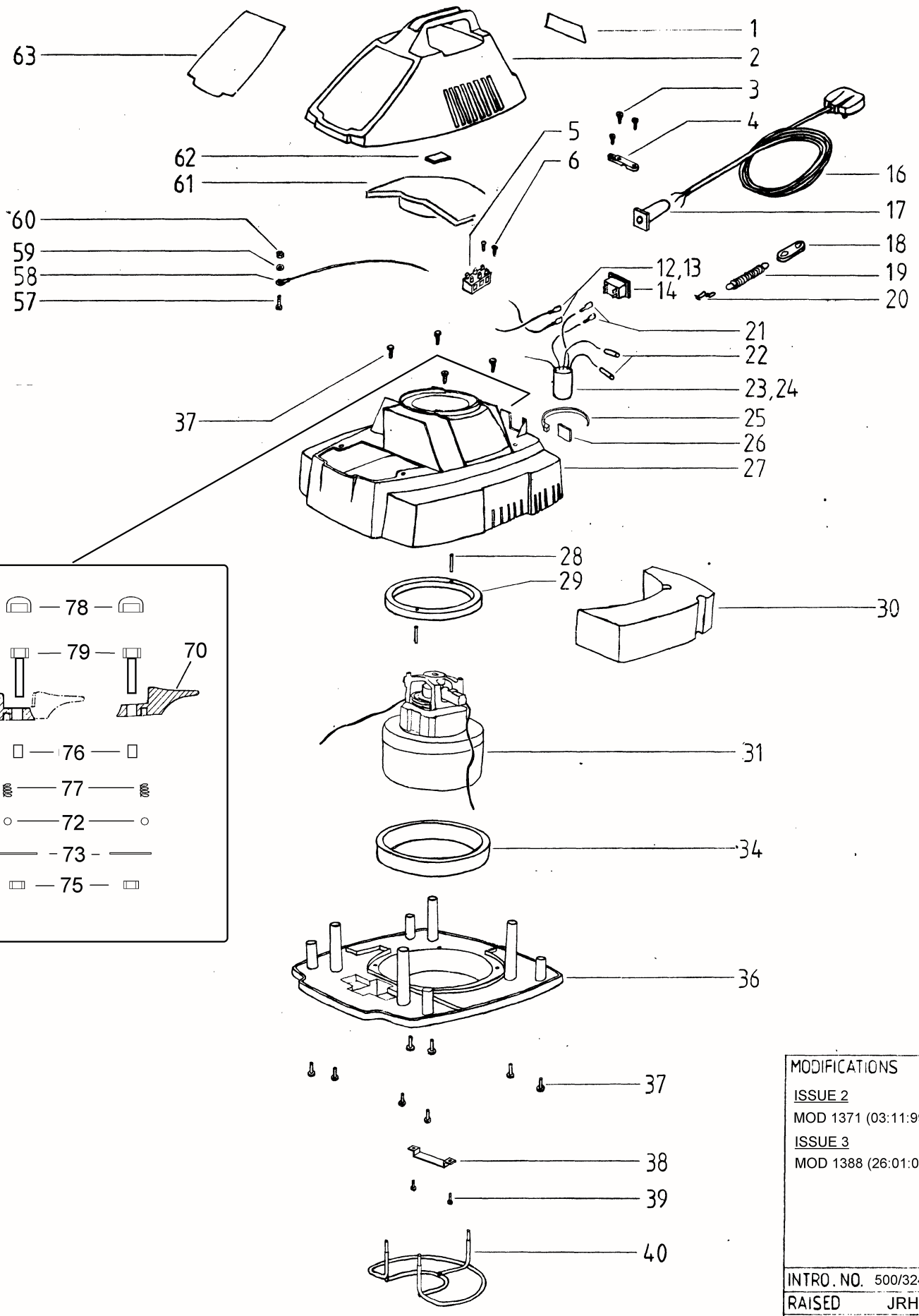
MODIFICATIONS  
 ISSUE 2  
 MOD 1365 01:10:00  
 ISSUE 3  
 MOD 1447 24:10:01)

INTRO. NO. 500/324  
 RAISED JRH  
 APPROVED

MODEL	240v	220v	110v		
DMV 175	55140	55141	55142		
SCHEDULE CODE NO'S.					

CONTAINER  
 DMV 175

ISSUE 3  
 DATE 01/06/99  
 EXP. VIEW CODE NO.  
 77242  
 SHEET 2 OF 2



MODIFICATIONS  
 ISSUE 2  
 MOD 1371 (03:11:99)  
 ISSUE 3  
 MOD 1388 (26:01:00)

---

INTRO. NO. 500/324  
 RAISED JRH  
 APPROVED

MODEL	240v	220vTUV	110v			MOTOR HEAD DMV 175
DMV 175	55140	55141	55142			
SCHEDULE CODE NO.'S						

ISSUE 3  
 DATE 01/06/99  
 EXP. VIEW CODE NO.  
 77241  
 SHEET 1 OF 2

## ELECTRICAL SPARES REPLACEMENT INSTRUCTIONS: DMV 175

### PLEASE READ BEFORE FITTING OF REPLACEMENT PART

Thank you for purchasing this original replacement part. Before fitting, machine users must ensure the following:-

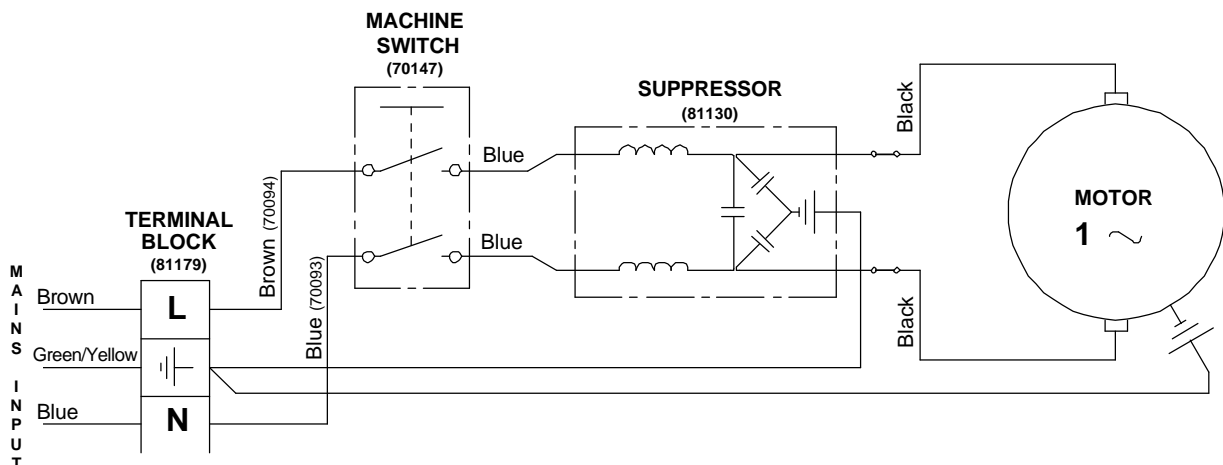
1. Replacement part is fitted by a qualified service engineer only.
2. Clear reference is made to the wiring diagram detailed below.
3. All test instructions are carried out as detailed below, before returning the electrical appliance to the work place.

Should you require further assistance please contact Premiere Products Machine Division Service department.

Failure to follow the above instructions may affect your rights in law.

**WARNING:** Before undertaking any repair or disassembly of machines ensure that it is disconnected from the mains.

### DMV 175 Machine Wiring Diagram



Premiere Products  
component Code No.  
shown in brackets

### **IMPORTANT: Electrical Safety Tests**

Upon completion of service and repair work and before returning the electrical appliance to the work place, the following testing for electrical safety must be undertaken.

1. Earth Bond Resistance (Class I only).

Resistance max. =  $(0.1 + R)$  Ohms

Where R = Resistance of supply cord earth wire.

2. Insulation Flash Test.

Class I appliance 1375 Volts AC for 6 secs. (Alternatively 1250 Volts AC for 10 secs.)

Class II appliance 4125 Volts AC for 6 secs. (Alternatively 3750 Volts AC for 10 secs.)



**Premiere Products (Machine Division)**  
Oakley Gardens, Bouncers Lane, Cheltenham, Glos. GL52 5JD, England  
Telephone: (01242) 243421 Fax: (01242) 528445