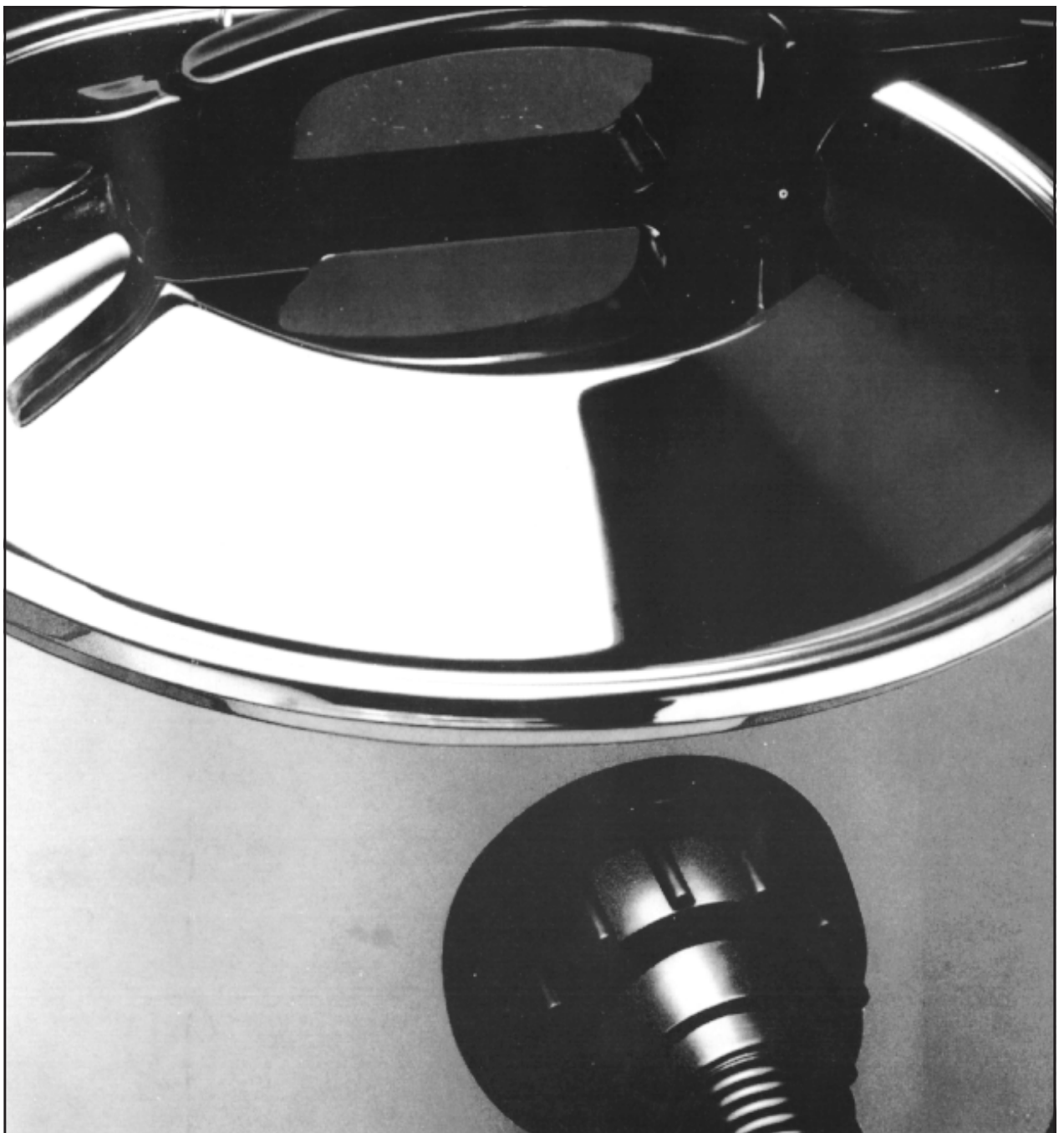


WPU 120 Vacuum Range

Spare Parts Lists
Exploded Views
Wiring Diagram

WPU 120 240V

WPU 120 110V



```

*****
* Item No. Product Code Description Quantity *
*****
* 1 81099 RATING LABEL(WPU 120) BSI 19/703 ISS 7 1 *
* 1 69120A UNICAP WASHER 2 *
* 2 81002 MOTORHEAD LID 19/604 ISS 8 1 *
* 2 69120B SNAP CAP (CAP) BLK 2 *
* 3 71311 SCREW WN1412-KB40X10-Z 3 *
* 4 81064 CABLE CLAMP 19/663 ISS 2 1 *
* 5 81179 TERMINAL BLOCK P19/787 ISS 1 1 *
* 6 71319 6 X 3/4 POZI PAN HD S/TAP SCRW AB ZINC/C 2 *
* 9 81060 WATERPROOF CAP P19/659 ISS 3 WPU ALL 1 *
* 12 70094 BRN CONN LEAD 1/600/13 1 *
* 13 70093 BLUE CONN LEAD 1/600/12 ISS 13 1 *
* 14 70147 ROCKER SWITCH 1 *
* 16 67424 CORDSET 3X1X10 3PIN 19/865 1 *
* 17 66404 CABLE GROMMET P18/663 ISS 2 1 *
* 18 69038 CABLE GRIP 2X1MM 7/649 ISS 5 1 *
* 19 65039 SPRING CABLE REST: 7/677 ISS 4 1 *
* 20 81129 RESTRAINT SPRING.19/734 ISS 1 1 *
* 21 70020 TERMINAL RED DVFP01-6.3F 2 *
* 22 70040 BUTT CONNECTOR DVBC 1 2 *
* 23 81130 MAINS SUPPRESSOR P19/735 ISS 4 1 *
* 25 70063 CABLE TIE ALT-250M PV4 1 *
* 26 81180 MTG PLATFORM P19/788 ISS 1 1 *
* 27 81112 WARNING LABEL 19/716 ISS 1 1 *
* 28 81001 MOTORHEAD TOP 19/602 ISS 9 NO PH 1 *
* 29 71026 M3.5 X 26 SPRING TENSION PIN 2 *
* 30 81048 MOTOR GASKET 10MM 19/646 ISS 1 1 *
* 31 81150 INSULATION EXHAUST19/757 ISS 7 1 *
* 32 70048 MOTOR BYPASS 220/240V 1 *
* 34 69027 MOTOR SUPPORT RING 7/646 ISS 3 MINI 1 *
* 36 81000 MOTORHEAD BASE 19/600 ISS 8 1 *
* 37 71308 SCREW PLASFORM NO8X19 12 *
* 41 81053 FLOAT HSG ASSY.19/651 ISS 10 WPU 1 *
* 42 81063 SPHERE 70MM NO DRG 1 *
* 43 71305 SCREW PLASTITE M3.5X10 CR PAN ST/STEEL 4 *
* 44 81072 GROMMET FLOAT SEAL P19/804 ISS 1 1 *
* 45 81045 SHUT OFF DISC.19/643 ISS 3 1 *
* 46 81046 SHUTOFF DISC GASKET19/644 ISS 2 1 *
* 50 81149 INSULATION BYPASS 19/756 ISS 7 1 *
* 52 71008 2BA SHAKEPROOF WASHER INTERNAL TEETH 1 *
* 53 81136 CABLE CONN Y&G 19/741 ISS 3 1 *
* 54 71009 10 X 1/2 POZI PAN HD S/TAP SCRW AB ZINC 1 *
* 55 81151 INSULATION INLET 19/758 ISS 7 1 *
* 56 69089 KWIKSTICK PAD 25MMX25MM 1 *
* 57 81090 MACHINE LABEL WPU 120 19/694 ISS 6 1 *
* 70 69198 CABLE REST: LEVER 7/675 ISS 4 MINI 2 *
* 72 65041 BALL STAINLESS 1/4DIA 2 *
* 73 71422 1/4 X 9/16 X 20G BRT STL WASHER TLB 3L 2 *
* 75 71164 M6 GRD 8 NYLON INSERT SELF LOCK NUT DIN9 2 *
* 76 81041 SPACER 19/872 ISS 1 2 *
*****

```

```

*****
* Item No. Product Code Description Quantity *
*****
* 77 65038 COMP SPRING 6/686 ISS 1 2 *
* 79 71348 M6 X 40 STEEL POZI PAN SCREW ZINC/CLEAR 2 *
* 100 81169 WET FILTER.19/776 ISS 2 1 *
* 101 71329 SCREW WN 1412 KB50 X 14Z EPOSEAL 8 *
* 102 81004 CONTAINER 20LITRE 19/606 ISS 13 120 1 *
* 103 81003 HANDLE MOULDING 19/605 ISS. 5 2 *
* 104 81050 CASTOR 35MM P19/660 ISS 1 120 ALL 2 *
* 105 81051 8MM SCREWED SHAFT P19/689 ISS 1 120 ALL 2 *
* 106 68011 WASHER 16SWG 2/691 ISS 5 ALL 2 *
* 107 71379 M5 X 25 STEEL POZI PAN SCR W ZINC & CLEAR 3 *
* 108 71008 2BA SHAKEPROOF WASHER INTERNAL TEETH 3 *
* 109 81006 AXLE.19/609 ISS 5 120 1 *
* 110 81069 WHEEL & CAP P19/678 ISS 3 120 2 *
* 111 71506 WASHER WAVE 1/2" DMV HEV 4 *
* 112 71421 1/2 X 1 X 17G BRT STL WASHER TBL 3L ZINC 4 *
* 113 71471 EXTERNAL CIRCLIP N1400 0050 4 *
* 115 69265 HOSE CONN SEAL 14/668 ISS 2 1 *
* 116 81018 INLET PLAIN 19/623 ISS 3 1 *
* 123 58302 32MM ST/ST TELESCOPIC EXTENSION TUBE 1 *
* 124 58282 WET FLOOR TOOL 370MM D370GL (32MM) 1 *
* 605 72407 OPERATING INSTR: WPU 120 1 *
* 606 72027 PACKING CASE DMV 19/873 ISS.3 1 *
* 607 72077 KITE SWING LABEL P7/775 ISS 1 1 *
* 608 72213 MAIN LEAD LABEL 3 CORE P16/1120/2 ISS 1 1 *
* 700 77201 EXP:VIEW ISSUE 7 100791 CTR S/A 1 *
* 700 77195 EXP:VIEW MTR HEAD ISS 8 WPU 1 *
* 800 77471 500/226 INTRO 27/07/94 1 *
* 801 77750 INTRO 500/330 ISS 1 01/10/99 1 *
* 801 77303 500/155 ISSUE 1 13/05/91 1 *
* 802 77879 MOD 1447 ISS 2 24/10/01 1 *
* 802 77478 MOD 1131 ISS 2 06/09/94 1 *
* 802 77783 MOD 1373 ISS 2 08/11/99 1 *
* 802 77304 MOD 923 ISSUE 2 23/05/91 2 *
* 802 77302 MOD 922 ISSUE 2 13/05/91 1 *
* 803 77860 MOD 1433 ISS 3 26/03/01 1 *
* 803 77363 MOD 978 ISSUE 3 31/01/92 1 *
* 803 77498 MOD 1163 ISS 3 18/04/95 1 *
* 803 77473 MOD 1125 ISS 3 27/07/94 1 *
* 804 77615 MOD 1275 ISS 4 18/06/97 1 *
* 804 77753 MOD 1365 ISS 4 01/10/99 1 *
* 805 77701 MOD 1318 ISS 5 03/09/98 1 *
* 805 77760 MOD 1366 ISS 5 12/10/99 1 *
* 909 58300 32MM ST/ST HOSE & P/GRIP ASSY 1 *
*****

```

PARTS LIST COMPLETE.

The following Sub Assemblies are available for the WPU 120 240V

UK

```

*****
* 69120          SNAP CAP & WASHER          *
*****

```

Comprising of the following item numbers:-

- 1, 2,

```

*****
* 83103          CONTAINER S/ASSY          WPU 120          *
*****

```

Comprising of the following item numbers:-

- 100, 101, 102, 103, 104, 105, 106, 107, 108, 109, 110, 111, 112, 113,
- 115, 116, 700, 801, 802, 803, 804, 805,

```

*****
* 83137          SHUT OFF VALVE S/A          *
*****

```

Comprising of the following item numbers:-

- 44, 45, 46,

```

*****
* 83139          MOTOR HEAD WPU 120 240V          *
*****

```

Comprising of the following item numbers:-

- 1, 2, 3, 4, 5, 6, 9, 12, 13, 14, 16, 17, 18, 19,
- 20, 21, 22, 23, 25, 26, 27, 28, 29, 30, 31, 32, 34, 36,
- 37, 41, 42, 43, 44, 45, 46, 50, 52, 53, 54, 55, 56, 57,
- 70, 72, 73, 75, 76, 77, 79, 607, 608, 700, 800, 802, 803,

Parts list for: 55182 WPU 120 110V

Page No. 1

```

*****
* Item No. Product Code Description Quantity *
*****
* 1 81101 RATING LABEL(WPU 120) 110V 19/705 ISS 7 1 *
* 1 69120A UNICAP WASHER 2 *
* 2 81002 MOTORHEAD LID 19/604 ISS 8 1 *
* 2 69120B SNAP CAP (CAP) BLK 2 *
* 3 71311 SCREW WN1412-KB40X10-Z 3 *
* 4 81064 CABLE CLAMP 19/663 ISS 2 1 *
* 5 81179 TERMINAL BLOCK P19/787 ISS 1 1 *
* 6 71319 6 X 3/4 POZI PAN HD S/TAP SCRW AB ZINC/7 2 *
* 9 81060 WATERPROOF CAP P19/659 ISS 3 WPU ALL 1 *
* 12 70094 BRN CONN LEAD 1/600/13 1 *
* 13 70093 BLUE CONN LEAD 1/600/12 ISS 13 1 *
* 14 70147 ROCKER SWITCH 1 *
* 16 67424 CORDSET 3X1X10 3PIN 19/865 1 *
* 17 66404 CABLE GROMMET P18/663 ISS 2 1 *
* 18 69038 CABLE GRIP 2X1MM 7/649 ISS 5 1 *
* 19 65039 SPRING CABLE REST: 7/677 ISS 4 1 *
* 20 81129 RESTRAINT SPRING.19/734 ISS 1 1 *
* 21 70020 TERMINAL RED DVFP01-6.3F 2 *
* 22 70040 BUTT CONNECTOR DVBC 1 2 *
* 23 81130 MAINS SUPPRESSOR P19/735 ISS 4 1 *
* 25 70063 CABLE TIE ALT-250M PV4 1 *
* 26 81180 MTG PLATFORM P19/788 ISS 1 1 *
* 27 81112 WARNING LABEL 19/716 ISS 1 1 *
* 28 81001 MOTORHEAD TOP 19/602 ISS 9 NO PH 1 *
* 29 71026 M3.5 X 26 SPRING TENSION PIN 2 *
* 30 81048 MOTOR GASKET 10MM 19/646 ISS 1 1 *
* 31 81150 INSULATION EXHAUST19/757 ISS 7 1 *
* 32 70075 MOTOR BYPASS 110V 1 *
* 34 69027 MOTOR SUPPORT RING 7/646 ISS 3 MINI 1 *
* 36 81000 MOTORHEAD BASE 19/600 ISS 8 1 *
* 37 71308 SCREW PLASFORM NO8X19 12 *
* 41 81053 FLOAT HSG ASSY.19/651 ISS 10 WPU 1 *
* 42 81063 SPHERE 70MM NO DRG 1 *
* 43 71305 SCREW PLASTITE M3.5X10 CR PAN ST/STEEL 4 *
* 44 81072 GROMMET FLOAT SEAL P19/804 ISS 1 1 *
* 45 81045 SHUT OFF DISC.19/643 ISS 3 1 *
* 46 81046 SHUTOFF DISC GASKET19/644 ISS 2 1 *
* 50 81149 INSULATION BYPASS 19/756 ISS 7 1 *
* 52 71008 2BA SHAKEPROOF WASHER INTERNAL TEETH 1 *
* 53 81136 CABLE CONN Y&G 19/741 ISS 3 1 *
* 54 71009 10 X 1/2 POZI PAN HD S/TAP SCRW AB ZINC 1 *
* 55 81151 INSULATION INLET 19/758 ISS 7 1 *
* 56 69089 KWIKSTICK PAD 25MMX25MM 1 *
* 57 81090 MACHINE LABEL WPU 120 19/694 ISS 6 1 *
* 70 69198 CABLE REST: LEVER 7/675 ISS 4 MINI 2 *
* 72 65041 BALL STAINLESS 1/4DIA 2 *
* 73 71422 1/4 X 9/16 X 20G BRT STL WASHER TLB 3L 2 *
* 75 71164 M6 GRD 8 NYLON INSERT SELF LOCK NUT DIN9 2 *
* 76 81041 SPACER 19/872 ISS 1 2 *
*****

```

```

*****
* Item No.   Product Code   Description                               Quantity *
*****
*      77    65038          COMP SPRING      6/686 ISS 1                2 *
*      79    71348          M6 X 40 STEEL POZI PAN SCREW ZINC/CLEAR 2 *
*     100    81169          WET FILTER.19/776 ISS 2                1 *
*     101    71329          SCREW WN 1412 KB50 X 14Z EPOSEAL        8 *
*     102    81004          CONTAINER 20LITRE 19/606 ISS 13 120    1 *
*     103    81003          HANDLE MOULDING 19/605 ISS. 5           2 *
*     104    81050          CASTOR 35MM P19/660 ISS 1 120 ALL       2 *
*     105    81051          8MM SCREWED SHAFT P19/689 ISS 1 120 ALL 2 *
*     106    68011          WASHER 16SWG 2/691 ISS 5 ALL           2 *
*     107    71379          M5 X 25 STEEL POZI PAN SCRW ZINC & CLEAR 3 *
*     108    71008          2BA SHAKEPROOF WASHER INTERNAL TEETH    3 *
*     109    81006          AXLE.19/609 ISS 5 120                  1 *
*     110    81069          WHEEL & CAP P19/678 ISS 3 120          2 *
*     111    71506          WASHER WAVE 1/2" DMV HEV                4 *
*     112    71421          1/2 X 1 X 17G BRT STL WASHER TBL 3L ZINC 4 *
*     113    71471          EXTERNAL CIRCLIP N1400 0050             4 *
*     115    69265          HOSE CONN SEAL 14/668 ISS 2             1 *
*     116    81018          INLET PLAIN 19/623 ISS 3                1 *
*     123    58302          32MM ST/ST TELESCOPIC EXTENSION TUBE    1 *
*     124    58282          WET FLOOR TOOL 370MM D370GL (32MM)      1 *
*     604    72407          OPERATING INSTR: WPU 120                 1 *
*     605    72027          PACKING CASE DMV 19/873 ISS.3           1 *
*     606    72213          MAIN LEAD LABEL 3 CORE P16/1120/2 ISS 1 1 *
*     607    72086          110 VOLTS ONLY LABEL P7/774 ISS 1       1 *
*     700    77195          EXP:VIEW MTR HEAD ISS 8 WPU             1 *
*     700    77201          EXP:VIEW ISSUE 7 100791 CTR S/A         1 *
*     800    77471          500/226 INTRO 27/07/94                  1 *
*     801    77750          INTRO 500/330 ISS 1 01/10/99            1 *
*     801    77303          500/155 ISSUE 1 13/05/91                1 *
*     802    77783          MOD 1373 ISS 2 08/11/99                  1 *
*     802    77478          MOD 1131 ISS 2 06/09/94                  1 *
*     802    77302          MOD 922 ISSUE 2 13/05/91                1 *
*     802    77304          MOD 923 ISSUE 2 23/05/91                2 *
*     802    77879          MOD 1447 ISS 2 24/10/01                  1 *
*     803    77473          MOD 1125 ISS 3 27/07/94                  1 *
*     803    77363          MOD 978 ISSUE 3 31/01/92                1 *
*     803    77498          MOD 1163 ISS 3 18/04/95                  1 *
*     803    77860          MOD 1433 ISS 3 26/03/01                  1 *
*     804    77615          MOD 1275 ISS 4 18/06/97                  1 *
*     804    77753          MOD 1365 ISS 4 01/10/99                  1 *
*     805    77701          MOD 1318 ISS 5 03/09/98                  1 *
*     805    77760          MOD 1366 ISS 5 12/10/99                  1 *
*     909    58300          32MM ST/ST HOSE & P/GRIP ASSY           1 *
*****

```

PARTS LIST COMPLETE.

The following Sub Assemblies are available for the WPU 120 110V

```

*****
* 69120          SNAP CAP & WASHER          *
*****

```

Comprising of the following item numbers:-

1, 2,

```

*****
* 83103          CONTAINER S/ASSY          WPU 120          *
*****

```

Comprising of the following item numbers:-

100, 101, 102, 103, 104, 105, 106, 107, 108, 109, 110, 111, 112, 113,
115, 116, 700, 801, 802, 803, 804, 805,

```

*****
* 83137          SHUT OFF VALVE S/A          *
*****

```

Comprising of the following item numbers:-

44, 45, 46,

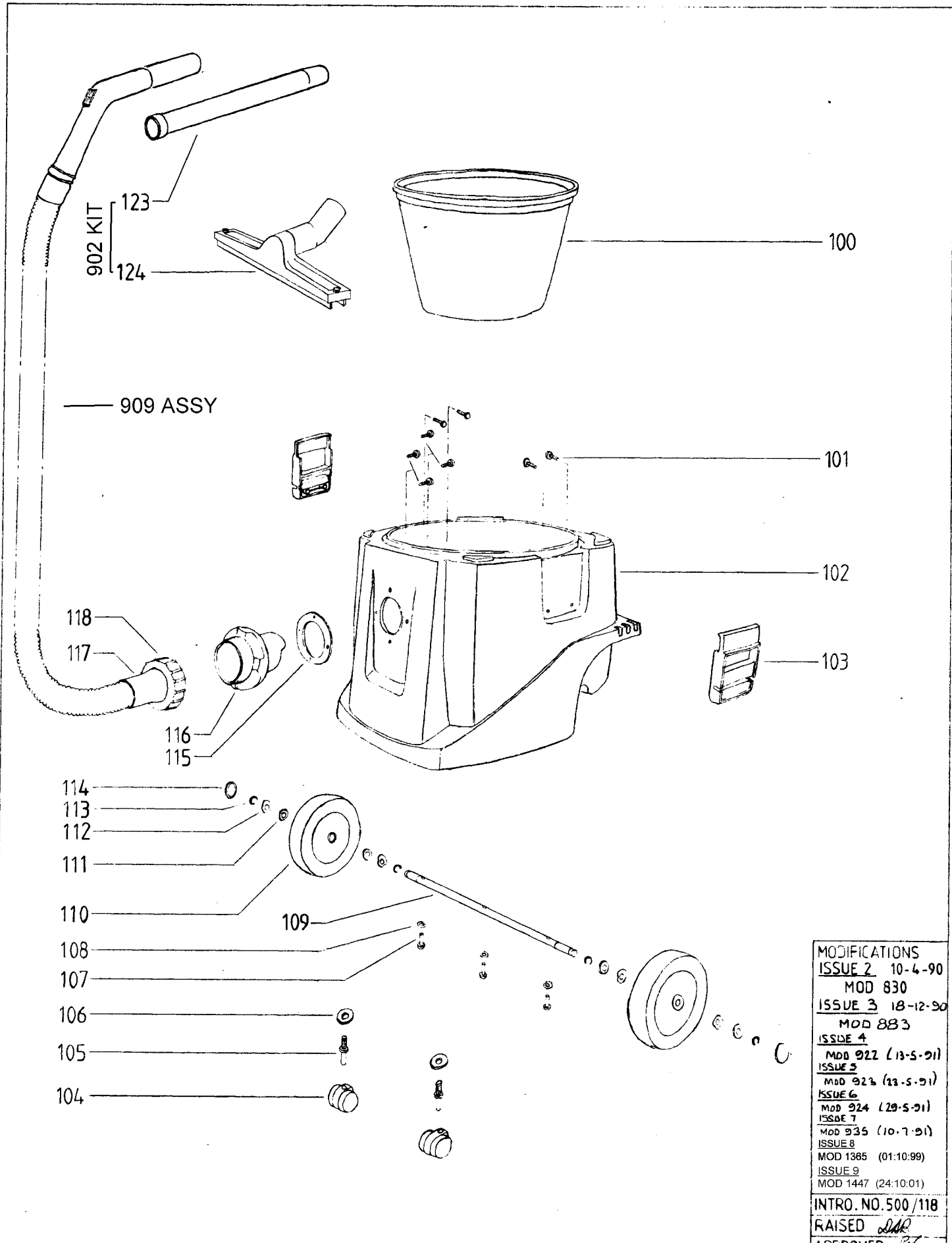
```

*****
* 83145          MOTOR HEAD WPU 120 110V          *
*****

```

Comprising of the following item numbers:-

1, 2, 3, 4, 5, 6, 9, 12, 13, 14, 16, 17, 18, 19,
20, 21, 22, 23, 25, 26, 27, 28, 29, 30, 31, 32, 34, 36,
37, 41, 42, 43, 44, 45, 46, 50, 52, 53, 54, 55, 56, 57,
70, 72, 73, 75, 76, 77, 79, 606, 607, 700, 800, 802, 803,



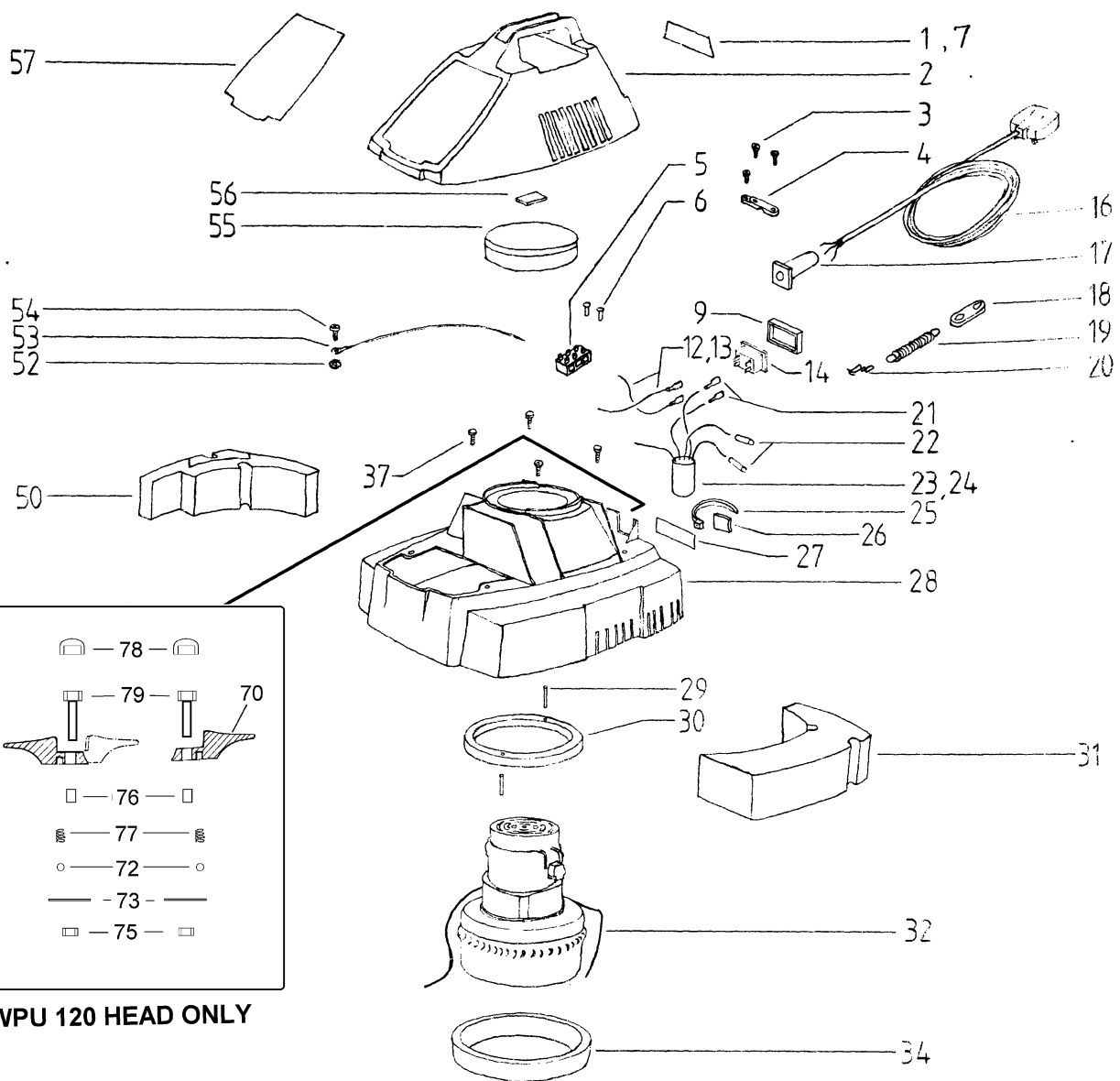
MODIFICATIONS
 ISSUE 2 10-4-90
 MOD 830
 ISSUE 3 18-12-90
 MOD 883
 ISSUE 4
 MOD 922 (13-5-91)
 ISSUE 5
 MOD 923 (13-5-91)
 ISSUE 6
 MOD 924 (29-5-91)
 ISSUE 7
 MOD 935 (10-7-91)
 ISSUE 8
 MOD 1365 (01-10-99)
 ISSUE 9
 MOD 1447 (24-10-01)

INTRO. NO. 500/118
 RAISED *DAR*
 APPROVED *96*

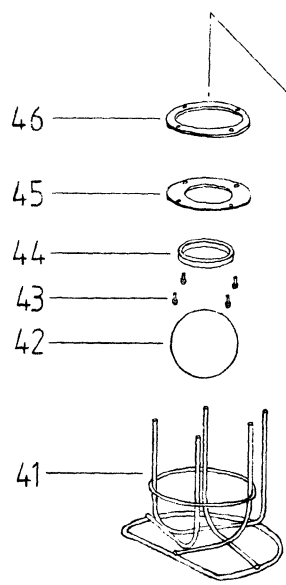
MODEL	240v	220v	110v	220v-NEMKO	220v FRANCE	110v 1200w
WPU 120	55180	55181 55184	55182	55183	55185 55188	55186
	55189	3-PIN PLUG 55179				
SCHEDULE CODE NO'S.						

CONTAINER
 WPU 120

ISSUE 9
 DATE 1-3-90
 EXP. VIEW CODE NO.
 77201
 SHEET 2 OF 2



WPU 120 HEAD ONLY



MODIFICATIONS
 ISSUE 2 10-4-90
 MOD 830
 ISSUE 3 19-6-90
 MOD 840
 ISSUE 4 18-2-90
 MOD 845
 ISSUE 5
 MOD 922 (13-5-91)
 ISSUE 6
 MOD 923 (23-5-91)
 ISSUE 7
 MOD 978 (31-01-92)
 ISSUE 8
 TAB 7018 (27-07-92)
 ISSUE 9
 MOD 1373 (08-11-99)
 ISSUE 10
 MOD 1433 (26-03-01)

INTRO. NO. 500/118
 RAISED
 APPROVED

MODEL	240v	220v	110v	220v NEMKC	220v 3 PIN	220v FRANCE	MOTOR HEAD WPU	ISSUE 10
WPU 120	55180	55181	55182	55183	55184	55185		DATE 1-3-90
WPU 140	55190	55191	55192	55193	55194	55196		EXP. VIEW CODE NO. 77195
WPU 160	55200	55201	55202		55204	55206		SHEET 1 OF 2

SCHEDULE CODE NO.'S

ELECTRICAL SPARES REPLACEMENT INSTRUCTIONS: WPU 120, 140 & 160

PLEASE READ BEFORE FITTING OF REPLACEMENT PART

Thank you for purchasing this original replacement part. Before fitting, machine users must ensure the following:-

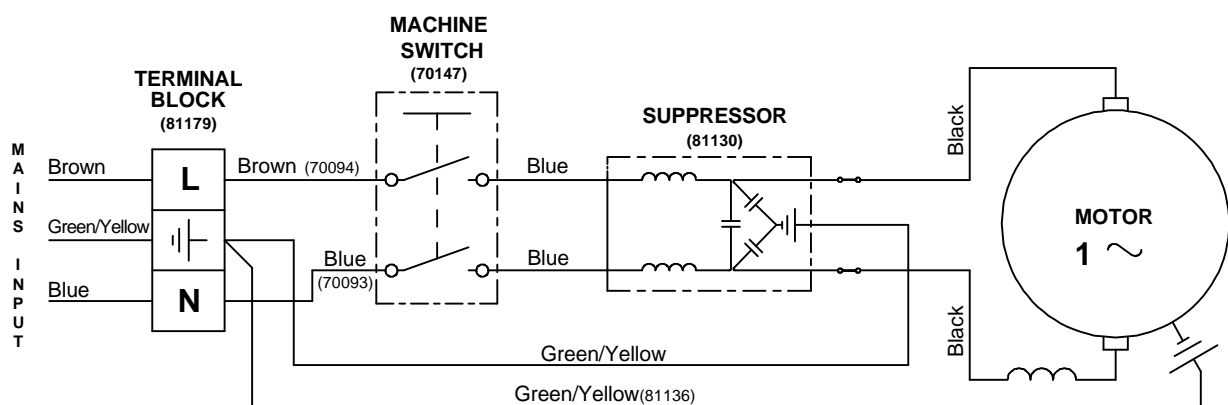
1. Replacement part is fitted by a qualified service engineer only.
2. Clear reference is made to the wiring diagram detailed below.
3. All test instructions are carried out as detailed below, before returning the electrical appliance to the work place.

Should you require further assistance please contact Premiere Products Machine Division Service department.

Failure to follow the above instructions may affect your rights in law.

WARNING: Before undertaking any repair or disassembly of machines ensure that it is disconnected from the mains.

WPU 120, 140 & 160 Machine Wiring Diagram



Premiere Products component Code No. shown in brackets

IMPORTANT: Electrical Safety Tests

Upon completion of service and repair work and before returning the electrical appliance to the work place, the following testing for electrical safety must be undertaken.

1. Earth Bond Resistance (Class I only).

Resistance max. = $(0.1 + R)$ Ohms

Where R = Resistance of supply cord earth wire.

2. Insulation Flash Test.

Class I appliance 1375 Volts AC for 6 secs. (Alternatively 1250 Volts AC for 10 secs.)

Class II appliance 4125 Volts AC for 6 secs. (Alternatively 3750 Volts AC for 10 secs.)



Premiere Products (Machine Division)
Oakley Gardens, Bouncers Lane, Cheltenham, Glos. GL52 5JD, England
Telephone: (01242) 243421 Fax: (01242) 528445